

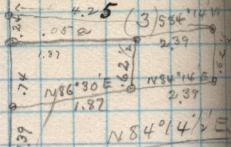
84-10
P-46

L. 25-87-5 acre
Plate

2.33

S. LINE LOT
25-87-5 acre

CENTER: Max 71 0' of
N 70° 58' E.



Payson Mill
6.30

(Lot 2)

N 9° 30' E
S.E. cor. Payson Mill

Knotted tree

N 40° 36' E
1/2 mile

1.4.72

Center Cañon
Road,
N 89° 49' E
true. 20.78
ch to turn.

44.25 ch
Tel. Pde.

98° 18' E
Court Appell.

5610' E
1/2 mile

0.58 ch
to center
Market Road

Dead from S. B. Dec 7 1974
to Myrtle Shaver Parkey
Lot 3-866-P.C. O.C.S.
Bsq 1.39 ch 1/2 from S. W. cor
thence N 86 1/2° E. 1.87
N. 62 1/2 ch N 84 1/4° E 2.39
N. 7.35 W. 4.25 S 3.31
to bsq 1.13 v. Dec 4-1972
(H 135)

1.39
2.74
2.37